

**IDO**  
CYCLE



**ISPIDO**  
MOTORCYCLE

CATALOGUE  
**2018**



The ISPIDO Motorcycle brand was created to meet the most important needs of motorcycle riders. If you have just started your adventure with two wheels, you travel occasionally or treat it as an optional form of transport - and at the same time you take care of your safety - ISPIDO Motorcycle products are perfect for you.

### In our offer you will find:

- ♥ helmets
  - open,
  - modular,
  - integral,
  - cross/enduro;
- ♥ jackets
- ♥ trousers
- ♥ gloves

ISPIDO Motorcycle helmets have been available on the market for 5 years and they are very popular. Colorful models with a characteristic signet ring in the logo have won crowds of satisfied customers during this time. 10 thousand different models are sold annually. Integral and modular helmets are the most popular ones.

The success of ISPIDO Motorcycle helmets has inspired us to expand the offer with motorcycle clothing. Basic models of jackets, trousers and gloves meet the needs of novice motorcyclists.

The brand's priorities are an affordable price that guarantees an appropriate level of safety, convenience and a modern, universal design - corresponding to market trends.

Safety is the basis in the rider's gear and that's why all products have the necessary certificates. Clothing is equipped with CE protectors and helmets are homologated in accordance with the applicable standard ECE 22.05.

With ISPIDO Motorcycle products, you will complete the necessary functional clothing and find a helmet that corresponds to your needs. Motorbike passion does not have to be associated with big expenses on accessories. Enjoy the freedom a motorcycle gives you with no limits.





p. 4-7

## INTEGRAL HELMETS

- p. 4 PULSE
- p. 5 PULSE LADY
- p. 6 RACE SV
- p. 7 ZONDA SV

p. 8-9

## MODULAR HELMETS

- p. 8 ARSEN
- p. 9 HIKER SV

p. 10-12

## OPEN HELMETS

- p. 10 AVIATOR
- p. 11 AVIATOR SV
- p. 12 JET SV

p. 13-14

## OFF-ROAD HELMETS

- p. 13 DESERT
- p. 14 HUMMER

p. 15

## JACKETS

- p. 15 SILVER
- p. 15 HELIUM
- p. 15 ARGON
- p. 15 ZINC
- p. 15 SELENIUM

p. 16

## TROUSERS

- p. 16 CARBON
- p. 16 SELENIUM

p. 17

## GLOVES

- p. 17 CURIUM
- p. 17 MERCURY
- p. 17 KRYPTON
- p. 17 FERMIUM



# PULSE

## COLOUR VARIANTS



COLOUR: Black/Red/Gray  
CATALOGUE NO.: IS0104/18/25



COLOUR: White/Red/Blue  
CATALOGUE NO.: IS0104/18/22



COLOUR: White/Black/Red  
CATALOGUE NO.: IS0104/18/23



COLOUR: Black/Fluo/Gray  
CATALOGUE NO.: IS0104/18/24



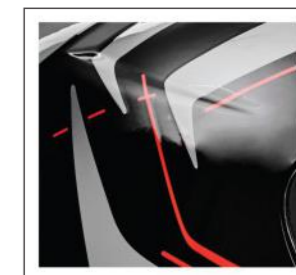
COLOUR: Black/Mat  
CATALOGUE NO.: IS0104/14/12



COLOUR: White  
CATALOGUE NO.: IS0104/18/20



COLOUR: Black  
CATALOGUE NO.: IS0104/14/10



Pulse is a basic integral helmet in Ispido Motorcycle offer. Despite of the incredible low price it has a necessary level of protection and comfort. Just like its higher model - Zonda SV, Pulse is made with a tested and resistant to damage ABS material. The only differences are lack of the sun visor and simplified ventilation system.

- SHELL:** Made with a thermoplastic ABS material
- VENTILATION SYSTEM:** Vents at the forehead and chin; 2 rear extractors
- INTERIOR:** Removable and washable inner liner and cheek pads
- VISOR:** Transparent main visor
- FASTENING SYSTEM:** Micrometric buckle
- WEIGHT:** 1400g
- SIZES:** XS (53-54 cm), S (55-56 cm), M (57-58 cm), L (59-60 cm), XL (61-62 cm), XXL (63-64 cm)



# PULSE LADY

## COLOUR VARIANTS



COLOUR: Black/Red/Silver/Gray  
CATALOGUE NO.: IS0104/18/27



COLOUR: White/Pink/Silver/Gray  
CATALOGUE NO.: IS0104/18/26



Pulse Lady is a basic integral helmet in Ispido Motorcycle offer dedicated for women. Despite of the incredible low price it has a necessary level of protection and comfort. Just like its higher model-Zonda SV, Pulse is made with a tested and resistant to damage ABS material. The only differences are lack of the sun visor and simplified ventilation system.

- SHELL:** Made with a thermoplastic ABS material
- VENTILATION SYSTEM:** Vents at the forehead and chin; 2 rear extractors
- INTERIOR:** Removable and washable inner liner and cheek pads
- VISOR:** Transparent main visor
- FASTENING SYSTEM:** Micrometric buckle
- WEIGHT:** 1400g
- SIZES:** XS (53-54 cm), S (55-56 cm), M (57-58 cm), L (59-60 cm), XL (61-62 cm), XXL (63-64 cm)



# RACE SV



COLOUR: Black/Fluo/Gray  
CATALOGUE NO.: IS0113/18/31



## COLOUR VARIANTS



COLOUR: White/Black/Silver  
CATALOGUE NO.: IS0113/18/25



COLOUR: White



COLOUR: Black  
CATALOGUE NO.: IS0113/15/10



COLOUR: Black/Red/Gray  
CATALOGUE NO.: IS0113/18/13



COLOUR: Black/Red/Gray  
CATALOGUE NO.: IS0113/18/32



COLOUR: Black/Mat  
CATALOGUE NO.: IS0113/15/12



COLOUR: White  
CATALOGUE NO.: IS0113/15/20



Race SV surprises with ergonomics, modern shape and finish quality. Shell of this model is made with fiberglass. It is the strongest material used in helmets, just like kevlar and carbon. Next advantages are 5 intake vents, visor's protection against accidental opening, removable lining and sun visor.

- SHELL:** Made with a fiberglass
- VENTILATION SYSTEM:** 5 intake vents, 2 extractors
- INTERIOR:** Removable and washable inner liner and cheek pads
- VISOR:** Transparent main visor, internal drop-down sun visor
- FASTENING SYSTEM:** Micrometric buckle
- WEIGHT:** 1400 g
- SIZES:** XS (53-54 cm), S (55-56 cm), M (57-58 cm), L (59-60 cm), XL (61-62 cm), XXL (63-64 cm)



# ZONDA SV



COLOUR: White/Black/Red  
CATALOGUE NO.: ISO108/18/22

## COLOUR VARIANTS



COLOUR: White/Red/Fluo  
CATALOGUE NO.: ISO108/18/23



COLOUR: White/Black/Red/Gray  
CATALOGUE NO.: ISO108/18/24



COLOUR: White/Red/Blue  
CATALOGUE NO.: ISO108/18/25



COLOUR: Black/Mat  
CATALOGUE NO.: ISO108/14/12



COLOUR: Black  
CATALOGUE NO.: ISO108/14/10

Zonda SV is an example how a very good quality can be offered in an unusual attractive price. This model offers a necessary standard for motorcyclists who start their adventure with two wheels but also for these who have a limited budget. A good ventilation system is provided by an expanded forehead vent and intake vent on the top of chin. It has a removable inner liner and cheek pads and an internal drop-down sun visor and sun visor as well.

- SHELL:** Made with a thermoplastic ABS material
- VENTILATION SYSTEM:** Expanded upper vent at the forehead with smooth adjustment of the opening; 2 front intake vents, 4 rear extractors
- INTERIOR:** Removable and washable lining
- VISOR:** Transparent main visor; internal drop-down sun visor
- FASTENING SYSTEM:** Micrometric buckle
- WEIGHT:** 1450 g
- SIZES:** XS (53-54 cm), S (55-56 cm), M (57-58 cm), L (59-60 cm), XL (61-62 cm), XXL (63-64 cm)



## COLOUR VARIANTS



COLOUR: White/Red/Blue  
CATALOGUE NO.: IS0116/18/26



COLOUR: White/Black/Red  
CATALOGUE NO.: IS0116/18/25



COLOUR: Black/Red/Gray  
CATALOGUE NO.: IS0116/18/27



COLOUR: White/Black/Silver  
CATALOGUE NO.: IS0116/18/28



Modular tourist helmet, with detachable chin guard, providing maximum comfort and a high level of safety. The helmet has an efficient ventilation system with front and chin intake vents and outtake vents at the back of the helmet and filterable sun visor. The helmet is completed by the modern shape of the shell.

- SHELL:** Made of thermoplastic ABS material
- VENTILATION SYSTEM:** Front and chin vents; outtake vents at the back of the helmet
- INTERIOR:** Detachable cheeks
- VISOR:** Transparent main visor; filterable sun visor
- FASTENING SYSTEM:** With a quick release mechanism
- WEIGHT:** 1450 g
- SIZES:** XS (53-54 cm), S (55-56 cm), M (57-58 cm), L (59-60 cm), XL (61-62 cm), XXL (63-64 cm)



# HIKER SV



COLOUR: Black  
CATALOGUE NO.: ISO115/16/10



## COLOUR VARIANTS



COLOUR: Black/Mat  
CATALOGUE NO.: ISO115/16/12



COLOUR: White  
CATALOGUE NO.: ISO115/16/20

Hiker is a modular tourist helmet. It's characterized by a high-quality inner liner which is made with a very soft fabric with high thermoactive abilities. Sun visor's lever is placed at the left side of the shell, on the bottom. It is a big switch with two ribs which can be easily found through a motorcycle glove. The visor gasket provides a proper and tight adhesion. Shell with sharp ribs makes it look more like an internal middle class helmet than a typical modular helmet what provides its attractive shape which will be still fashionable in the next couple of seasons.

- SHELL:** Made with a thermoplastic ABS material
- VENTILATION SYSTEM:** Expanded ventilation system: 5 front air intakes and 4 rear extractors
- INTERIOR:** Fully removable and washable inner liner and cheek pads
- VISOR:** Transparent main visor; internal drop-down sun visor
- FASTENING SYSTEM:** Micrometric buckle
- WEIGHT:** 1650 g
- SIZES:** XS (53-54 cm), S (55-56 cm), M (57-58 cm), L (59-60 cm), XL (61-62 cm), XXL (63-64 cm)



# AVIATOR

## COLOUR VARIANTS



COLOUR: White  
CATALOGUE NO.: ISO101/14/20



COLOUR: Black/Mat  
CATALOGUE NO.: ISO101/14/12



COLOUR: Black  
CATALOGUE NO.: ISO101/14/10



Aviator is dedicated for riding city scooters and classic-cruiser motorcycles as well. The project has been made according to the latest trends what means that the special shape of the shell is complemented with a wide and deep visor which provides an extensive field of view and protects against wind and cold air. Its advantages are removable inner liner and cheek pads, and very low weight - 1300 g.

- SHELL:** Made with a thermoplastic ABS material
- VENTILATION SYSTEM:** 2 ventilators at the forehead and 2 rear extractors
- INTERIOR:** Removable and washable inner liner and cheek pads
- VISOR:** Transparent main visor
- FASTENING SYSTEM:** Micrometric buckle
- WEIGHT:** 1300 g
- SIZES:** XS (53-54 cm), S (55-56 cm), M (57-58 cm), L (59-60 cm), XL (61-62 cm), XXL (63-64 cm)



# AVIATOR SV

## COLOUR VARIANTS



COLOUR: Black  
CATALOGUE NO.: ISO110/14/10



COLOUR: White  
CATALOGUE NO.: ISO110/14/20



COLOUR: Black/Mate  
CATALOGUE NO.: ISO110/14/12



Aviator is dedicated for riding city scooters and classic-cruiser motorcycles as well. The project has been made according to the latest trends what means that the special shape of the shell is complemented with a wide and deep visor which provides an extensive field of view and protects against wind and cold air. Its advantages are sun visor, removable inner liner and cheek pads, and very low weight – 1300 g.

- SHELL:** Made with a thermoplastic ABS material
- VENTILATION SYSTEM:** 2 ventilators at the forehead and 2 rear extractors
- INTERIOR:** Removable and washable inner liner and cheek pads
- VISOR:** Transparent main visor, sun visor
- FASTENING SYSTEM:** Micrometric buckle
- WEIGHT:** 1300 g
- SIZES:** XS (53-54 cm), S (55-56 cm), M (57-58 cm), L (59-60 cm), XL (61-62 cm), XXL (63-64 cm)





COLOUR: Black  
CATALOGUE NO.: IS0111/15/10



COLOUR: White  
CATALOGUE NO.: IS0111/15/20



COLOUR: Black/Mat  
CATALOGUE NO.: IS0111/15/12

Jet SV is a classic open face helmet dedicated for riding city scooters and classic-cruiser motorcycles as well. The project has been made according to the latest trends what means that the special shell shape is complemented with big intake vents and main visor with an extensive field of view. A blockbuster in this price category is removable lining and a sun visor.

- SHELL:** Made with a thermoplastic ABS material
- VENTILATION SYSTEM:** Vents at the forehead and rear extractors
- INTERIOR:** Removable and washable inner liner and cheek pads
- VISOR:** Transparent main visor; internal drop-down sun visor
- FASTENING SYSTEM:** Micrometric buckle
- WEIGHT:** 1300 g
- SIZES:** XS (53-54 cm), S (55-56 cm), M (57-58 cm), L (59-60 cm), XL (61-62 cm), XXL (63-64 cm)





COLOUR: Black/Mat  
CATALOGUE NO.: IS0109/14/12



COLOUR: White  
CATALOGUE NO.: IS0109/14/20



COLOUR: Black  
CATALOGUE NO.: IS0109/14/10

Desert absolutely has the best price in DUAL helmets category. It meets the enduro motorcyclists' and ATV owners' requirements thanks to being equipped with a detachable peak, a transparent main visor and an internal drop-down sun visor. Sun visor's lever is located in an easy to reach place. 5 front vents and 4 rear vents provide a proper ventilation system.

- SHELL:** Made with a thermoplastic ABS material
- VENTILATION SYSTEM:** Expanded ventilation system: 5 front air intakes and 4 rear extractors
- INTERIOR:** Fully removable and washable inner liner and cheek pads
- VISOR:** Transparent main visor; internal drop-down sun visor
- FASTENING SYSTEM:** Micrometric buckle
- WEIGHT:** 1600 g
- SIZES:** XS (53-54 cm), S (55-56 cm), M (57-58 cm), L (59-60 cm), XL (61-62 cm), XXL (63-64 cm)



# HUMMER



COLOUR: White/Green/Orange  
CATALOGUE NO.: IS0105/18/17



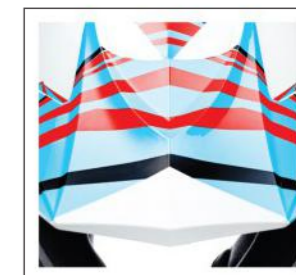
## COLOUR VARIANTS



COLOUR: White/Blue/Red  
CATALOGUE NO.: IS0105/18/19



COLOUR: White  
CATALOGUE NO.: IS0105/18/20



Hummer is a perfect option for motorcyclists who take their first steps in off-road riding. Modern shell shape and considered construction solutions provide a comfortable use and durability.

- SHELL:** Made with a thermoplastic ABS material
- VENTILATION SYSTEM:** Vents at the forehead and chin; rear extractors
- INTERIOR:** Removable and washable inner liner and cheek pads
- FASTENING SYSTEM:** DD type
- WEIGHT:** 1350 g
- SIZES:** XS (53-54 cm), S (55-56 cm), M (57-58 cm), L (59-60 cm), XL (61-62 cm), XXL (63-64 cm)



# JACKETS



## SILVER

CATALOGUE NO.: IS0224/18

SHORT MEN'S TOURIST JACKET

- sporty cut
- waterproof PVC membrane
- detachable thermal liner
- vents located at the front and rear
- comfortable high collar
- certified shoulder and elbow protectors
- two inner pockets
- pocket for documents
- pocket for phone
- reliable YKK zipper

Men's textile jacket with distinctive color motifs. White-gray accents make the classic straight look more dynamic. Perfect for a short and long route with variable aura. Maxdura Pro 600 material protected with a waterproof layer protects the jacket from soaking. Additionally, the membrane built into the outer layer is an ideal protection against rain. On warm days a removable thermal liner and two vents placed on the front and one large on the back will be useful. CE protectors of shoulders and elbows protect the most important places, and reflective elements placed on the jacket additionally protect the driver. A set of capacious pockets - two outer, two inner and one for documents and a telephone are a very practical solution for every motorcyclist.



## HELIUM

CATALOGUE NO.: IS0222/18

LONG MEN'S TOURIST JACKET

- top layer 100% polyester
- integrated waterproof membrane
- detachable thermal liner
- certified shoulder and elbow protectors
- two outer pockets
- two inner pockets
- regulation of waist and sleeve circumferences
- reflective details
- vents at the front and rear

Helium is new in the Ispido Motorcycle offer. Helium textile tourist jacket is a very practical model that works well during long trips. A waterproof layer that covers the abrasion-resistant material and built-in membrane protect the jacket from soaking water. Detachable liner allows comfortable driving at high and low temperatures. Certified elbow and shoulder protectors protect critical areas in the event of a fall. Furthermore, the HELIUM jacket is equipped with four pockets - two inner and two outer ones, protected against the ingress of water. Vents at the front and back of the jacket prevent overheating while riding.



## ARGON

CATALOGUE NO.: IS0221/18

SHORT MEN'S TOURIST JACKET

- top layer 100% polyester
- integrated waterproof membrane
- detachable thermal liner
- certified shoulder and elbow protectors
- two outer pockets
- two inner pockets
- regulation of waist and sleeve circumferences
- reflective details
- vents at the front and rear

ARGON is new in the IspidoMotorcycle offer. The classic ARGON tourist jacket is a universal model designed for riding in various weather conditions. The used material is resistant to abrasion and even a spot damage does not weaken the fabric structure. A detachable thermal liner allows comfortable riding both on warm and cold days. The waterproof membrane integrated with the outer layer protects the rider from getting wet. This model is also equipped with certified elbow and shoulder protectors. The pad on the back is also an additional protection. The straight cut and the fashion of the ARGON jacket will be liked by motorcyclists who prefer inexpensive and classic solutions. Two inner and outer pockets can hold basic items such as documents, wallet or telephone.



## ZINC

CATALOGUE NO.: IS0225/18

MEN'S TOURIST JACKET

- made of 600DN polyester and Mesh panels
- shoulder and elbow protectors with CE certificate
- jacket-pants fastening system
- comfortable collar
- two outer pockets
- pocket for documents
- pocket for phone
- reliable YKK zipper

This is a very interesting solution dedicated to driving on warm summer days. The outer material is a 600DN Polyester resistant for abrasion, combined with extensive ventilation zones made of Mesh material. The jacket is equipped with shoulder and elbow protectors. Reflective elements are already standard in Ispido Motorcycle jackets.



## SELENIUM

CATALOGUE NO.: IS0223/18

WOMEN'S TOURIST JACKET

- top layer: 100% polyester
- detachable thermal liner
- integrated waterproof membrane
- removable certified shoulder and elbow protectors
- a pad on the back
- reflective elements
- two outer pockets and two inner pockets
- vents at the front and back

A simple, aesthetic textile jacket for women with versatile use. It provides comfort in the most atmospheric conditions thanks to a waterproof membrane and a detachable thermal liner. Vents on the chest and a large vent on the back provide optimal cooling during the ride on warmer days. The shoulder and elbow pads with CE certificate and back protector ensure safety. An additional advantage of the jacket are two capacious outer pockets and two inner pockets. This model offers a complete solution that motorcyclists will appreciate when looking for practical travel clothing, ensuring comfort in all weather conditions. This model fits perfectly with women's ISPIDOMotorcycle Selenium trousers.



# TROUSERS

## CARBON

CATALOGUE NO.: IS0401/18

MEN'S TOURIST TROUSERS

- made of polyester material
- integrated breathable waterproof membrane
- detachable thermal liner
- loops for mounting suspenders
- reflective elements
- waist circumference adjustment

They are new in the ISPIDOMotorcycle offer. Carbon textile trouser are designed to provide maximum functionality in all conditions. It is also a model made according to current trends. The base of the structure is made of polyester material and it is resistant to abrasion and soaking.

These trousers have been equipped with all the necessary construction elements that affect their quality, safety and universal use. The watertight membrane is integrated with the outer layer, the detachable thermal liner will be used on colder days, and the CE approved knee protectors are responsible for safety.



## SELENIUM

CATALOGUE NO.: IS0402/18

WOMEN'S TOURIST TROUSERS

- outer layer 100 polyester
- waterproof, integrated membrane
- detachable thermal liner
- knee protectors with CE certificate
- two outer pockets
- adjustment of the legs' bottom
- comfortable fastening of the belt - velcro strap
- reflective elements

Selenium trousers designers have used several accents that emphasize the feminine qualities of this clothes and the typical women's cut. These contain a membrane integrated in the outer layer and a detachable thermal liner. Knees are protected by certified protectors. The front pockets are lined with waterproof material. The vents provide comfort on warm days. This model fits perfectly with the ISPIDO Motorcycle Selenium women's jacket.





# GLOVES



## CURIUM

CATALOGUE NO.: IS0602/18

LONG SUMMER MEN'S TOURIST GLOVES (FULL LEATHER)

- made of fabric and reinforced with soft leather
- a hard knuckle protector
- velcro strap fastening at the wrist
- cuff closure

Long universal gloves with a hard knuckle protector and additional soft protective zones. Recommended for driving in the spring and summer season. Velcro closure at the wrist combined with an elastic element of the "accordion" skin allows for a precise and good fit.



## KRYPTON

CATALOGUE NO.: IS0604/18

MESH MEN'S TOURIST GLOVES

- made of textile, suede and synthetic leather
- hard knuckle protector
- individual finger protectors
- elastic zones
- welt in the wrist
- velcro cuff fastening

Summer gloves dedicated to urban and tourist rides on the hottest days of the year. The short cut does not block the inflow of air through the cuff of the jacket to the inside. Their design on the outside is based on a mesh, airy material, while the inner side is made of suede reinforced with synthetic leather resistant to abrasion. On the upper part there is a large knuckle protector, and there are small hard protectors on individual fingers. Elastic zones ensure comfort of use.



## MERCURY

CATALOGUE NO.: IS0601/18

MEN'S TOURIST GLOVES

- made of soft leather
- airy ventilation panels
- soft finger protectors
- velcro strap fastening at the wrist

Universal, simple gloves designed for riding in warm days. Short cuff and panels made of breathable mesh guarantee excellent ventilation.



## FERMIUM

CATALOGUE NO.: IS0603/18

WOMEN'S SHORT TEXTILE GLOVES

- reinforced with soft leather
- soft inner lining
- fastening at the wrist

Women's short textile gloves with leather reinforcements. A very interesting vintage style will perfectly match riding classic motorcycles and scooters. The characteristic seams give them a unique style.

Outer design is based on a textile material, while the inner side is made of leather which gives an additional layer resistant to abrasion.



## INTERNATIONAL SALES NETWORK

### Croatia

Goran Zarić  
INTER CARS d.o.o.  
Krapinska ulica 37, 10290 Zaprešić  
Tel.: +385 99 2192 824, gzaric@intercars.eu

### Czech Republic

Petr Janovác  
Inter Cars Česká republika s.r.o.  
Novodvorská 1062/12, 142 01 Praha 4  
Tel.: +420 724 258 886, Petr.Janovac@intercars.eu

### Estonia

Stanislav Stepanov  
Inter Cars Estonia  
Kanali tee 12, 10112 Tallinn  
Tel.: +3725124990, sstepano@intercars.eu

### Hungary

Bindics Márton  
Inter Cars Hungária Kft.  
Frangepán utca 44/B, 1139 Budapest  
Tel.: +36205035028, mbindics@intercars.eu

### Latvia

Andzs Rozenbergs  
INTER CARS LATVIJA SIA  
Plienciema Lela 35LV-2167 Marupes Novads , Marupe Latvia  
Tel.: +37127660532, arozenbe@intercars.eu

### Lithuania

Reda Malijonytė  
UAB Inter Cars Lietuva  
Titnago g. 6, LT-02300 Vilnius, Warehouse nr. 279078  
Tel.: +370 612 25424, rmalijon@intercars.eu

### Romania

Eduard Nagelschmidt  
Inter Cars Romania  
str.Campul Painii nr. 3-5 Cluj ( 2nd floor),  
400058 Cluj-Napoca City, Judet/County : Cluj  
Tel.: +40746293375, Eduard.Nagelschmidt@intercars.eu

### Slovakia

Petr Janovác  
Inter Cars Slovenska republika s.r.o.  
Ivanska cesta 2, 821 04 Bratislava  
Tel.: +421 907 787 597, mhales@intercars.eu

www.ispido.com  
info@ispido.com



EXCLUSIVE IMPORTER OF ISPIDO MOTORCYCLE PRODUCTS